

# TI 83Plus/ 84

## Solving Systems of Two Linear Equations - Graphically

**Intersection method.** Enter each side of the equation into the y-editor [Y=]

Example:

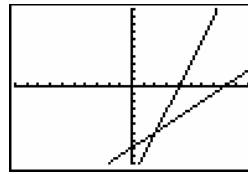
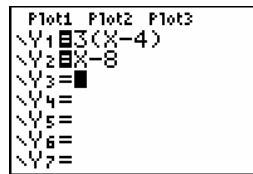
$$y = 3(x - 4)$$

$$y = x - 8$$

Enter  $Y_1 = 3(x - 4)$  and  $Y_2 = x - 8$ .

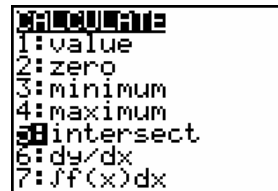
Press [ZOOM] 6 to graph in a standard 10 x 10 window.

Adjust the window as needed

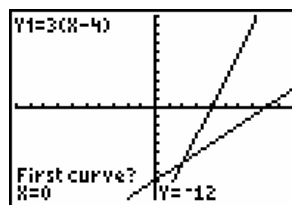


**Find the point of intersection.**

Press [2nd] [CALC] 5 .

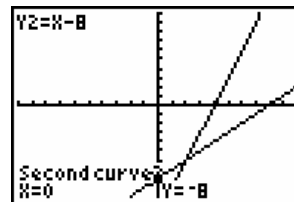


1



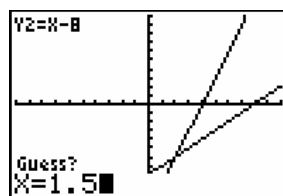
Press [ENTER] key

2



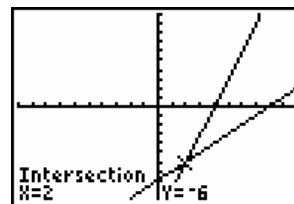
Press [ENTER] key  
again

3



Move cursor or enter a  
value. Press [ENTER]  
key.

4



$x = 2$   $y = -6$